



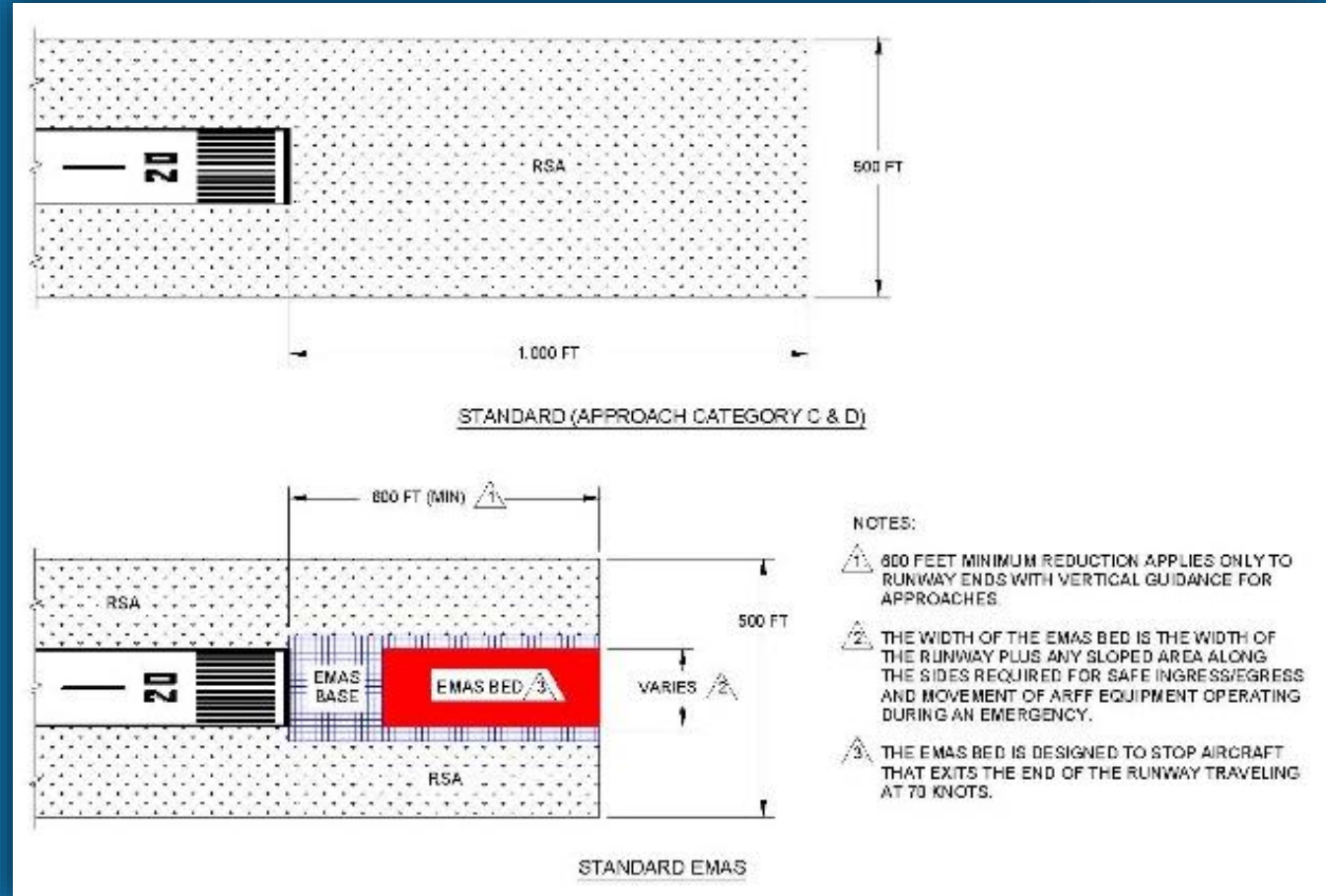
Airside Alternatives

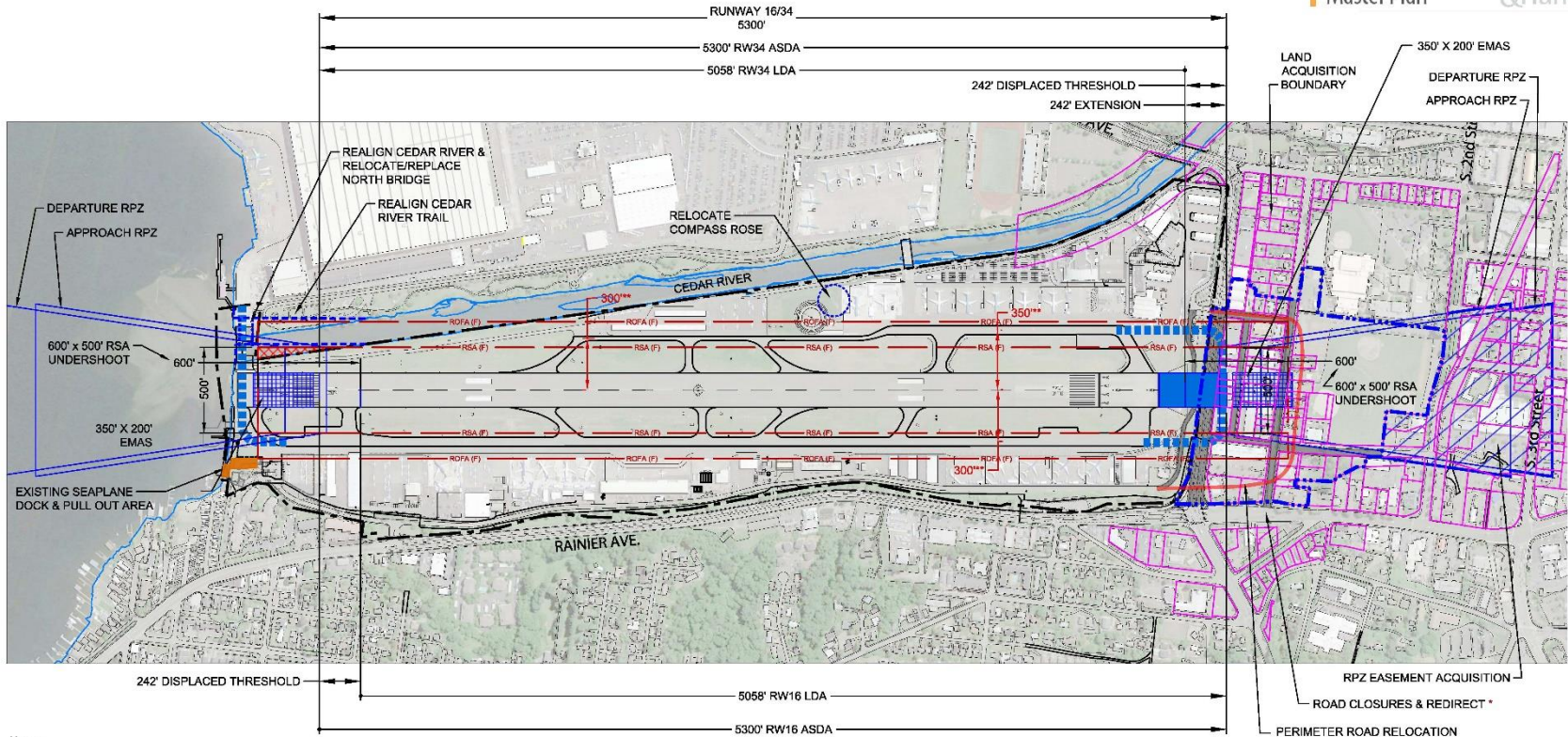
Renton Airport Advisory Committee (RAAC), May 2018

Master Plan

Renton Municipal Airport/
Clayton Scott Field

Traditional Graded RSA vs. EMAS





Notes:
 * Airport Way and portions of Tillicum St., Tobin St. & Lake Ave. to be closed. Airport Way traffic between Renton Ave. and Logan Ave. would be redirected to 2nd & 3rd streets.
 ** RW/TW separation to be addressed with operational mitigation.

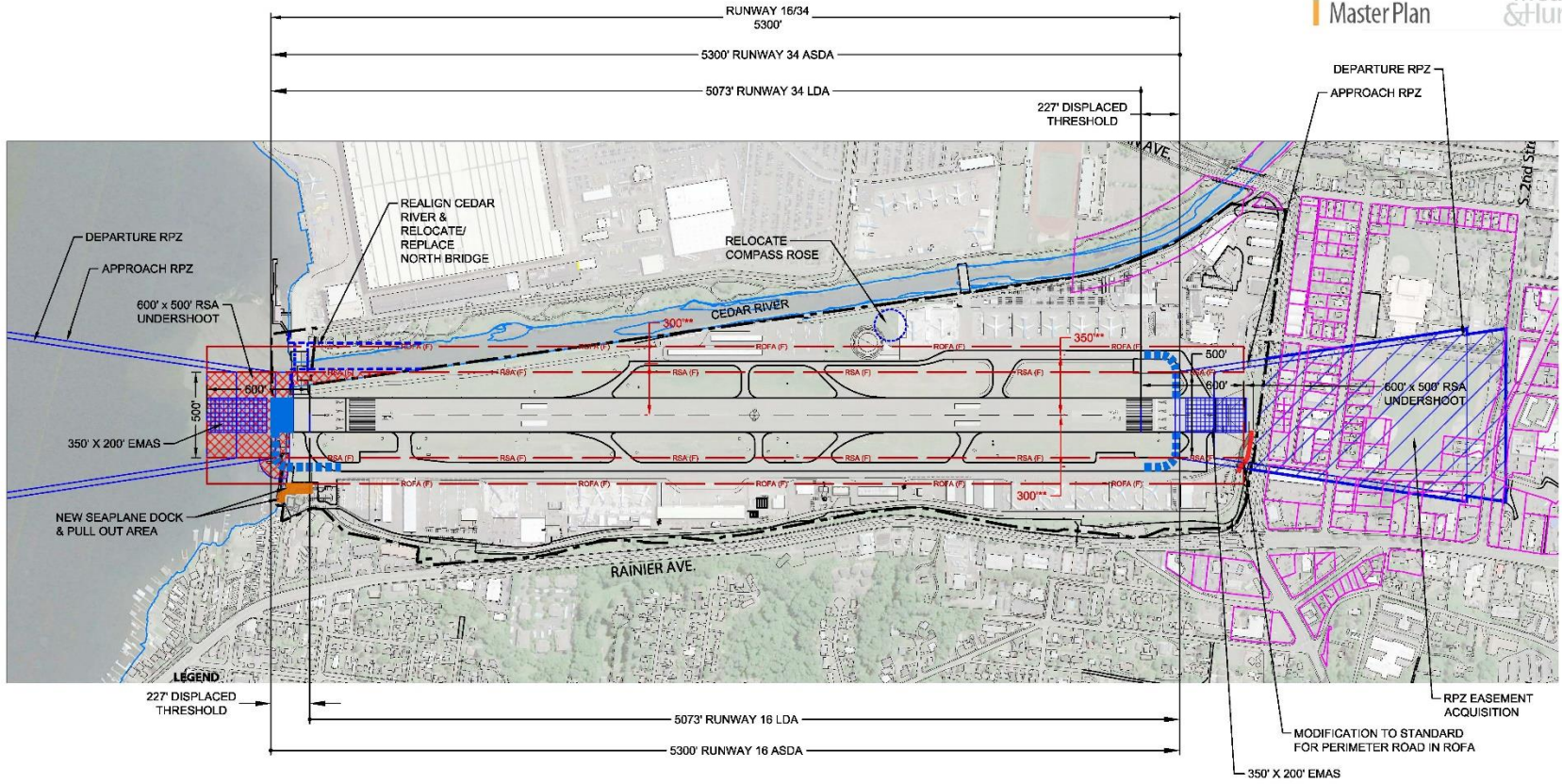
Disclaimer:
 This illustration is for study purposes only, based on national FAA standards, and is not necessarily intended for implementation. For further information please see Chapter D of the Airport Master Plan and the FAQ document on the Airport's website.

LEGEND

- EXISTING PROPERTY LINE
- - - FUTURE FUTURE PROPERTY LINE
- ROAD CLOSURE
- FUTURE ROADWAY ALIGNMENT
- RSA (F) FUTURE RUNWAY SAFETY AREA (RSA)
- ROFA (F) FUTURE RUNWAY OBJECT FREE AREA (ROFA)
- TOFA (F) FUTURE TAXIWAY OBJECT FREE AREA (TOFA)
- ||||| FUTURE TAXIWAY
- ▨ FUTURE RUNWAY SAFETY AREA EXPANSION
- FUTURE PAVEMENT
- FUTURE SEAPLANE DOCK
- ▨ PROPOSED BUILDING/FACILITY DEMOLITION
- ▨ FUTURE RPZ EASEMENT
- ▨ FUTURE ENGINEERED MATERIAL ARRESTING SYSTEM (EMAS)



FIGURE D8 Alternative 4 - Declared Distances and EMAS w/ South Shift



Notes:
 ** RW/TW separation to be addressed with operational mitigation.

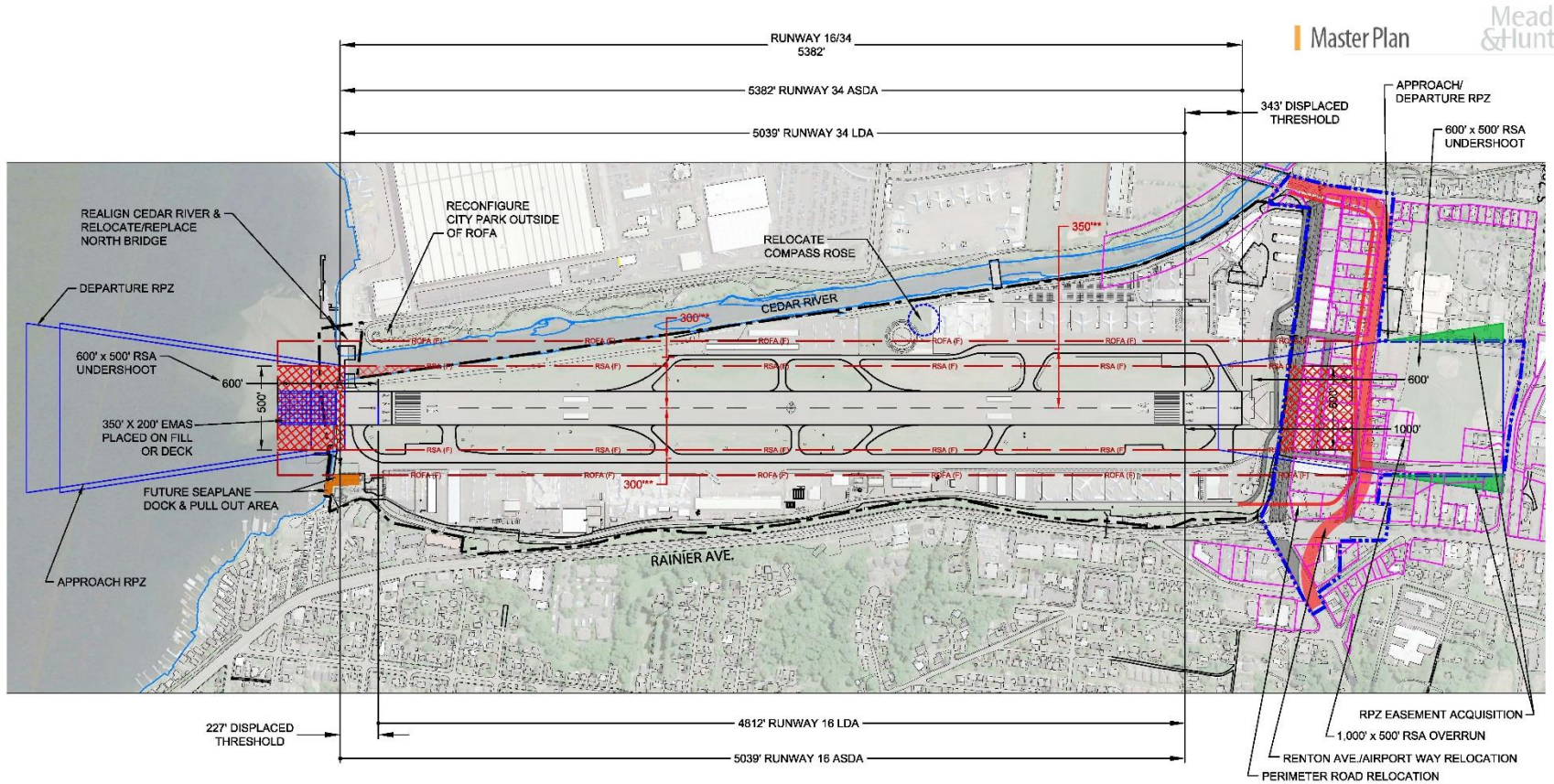
Disclaimer:
 This illustration is for study purposes only, based on national FAA standards, and is not necessarily intended for implementation. For further information please see Chapter D of the Airport Master Plan and the FAQ document on the Airport's website.

LEGEND

- EXISTING PROPERTY LINE
- ROAD CLOSURE
- FUTURE ROADWAY ALIGNMENT
- RSA (F) FUTURE RUNWAY SAFETY AREA (RSA)
- ROFA (F) FUTURE RUNWAY OBJECT FREE AREA (ROFA)
- TOFA (F) FUTURE TAXIWAY OBJECT FREE AREA (TOFA)
- FUTURE TAXIWAY
- FUTURE RUNWAY SAFETY AREA EXPANSION
- FUTURE PAVEMENT
- FUTURE SEAPLANE DOCK
- PROPOSED BUILDING/FACILITY DEMOLITION
- FUTURE RPZ EASEMENT
- FUTURE ENGINEERED MATERIAL ARRESTING SYSTEM (EMAS)



FIGURE D9 Alternative 5 - Declared Distances and EMAS w/ North Shift



Notes:
 * Existing land uses in controlled activity area to remain.
 **RW/TW separation to be addressed with operational mitigation.
Disclaimer:
 This illustration is for study purposes only, based on national FAA standards, and is not necessarily intended for implementation. For further information please see Chapter D of the Airport Master Plan and the FAQ document on the Airport's website.

LEGEND

- | | |
|---------------------------------------|----------------------------------------------------|
| EXISTING PROPERTY LINE | FUTURE RSA EXPANSION |
| FUTURE FUTURE PROPERTY LINE | FUTURE SEAPLANE DOCK |
| ROAD CLOSURE | RPZ CONTROLLED ACTIVITY AREA (EASEMENT)* |
| FUTURE ROADWAY ALIGNMENT | PROPOSED BUILDING/FACILITY DEMOLITION |
| FUTURE RUNWAY SAFETY AREA (RSA) | FUTURE RPZ EASEMENT |
| FUTURE RUNWAY OBJECT FREE AREA (ROFA) | FUTURE ENGINEERED MATERIAL ARRESTING SYSTEM (EMAS) |



FIGURE D10 **Alternative 6 - Declared Distances with EMAS North and Traditional Graded RSA South**

Preferred Airfield Alternative Considerations

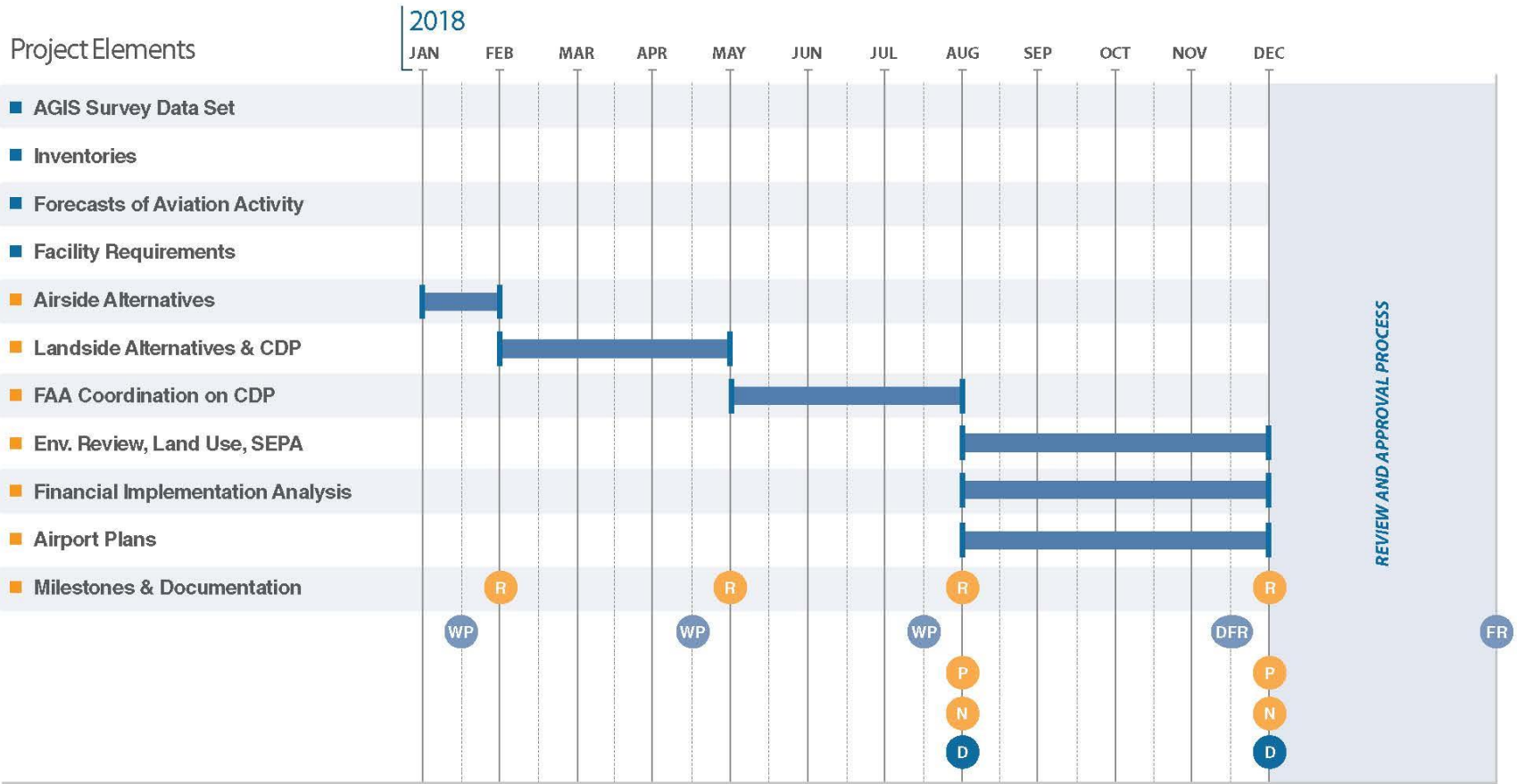
- RAAC Input
- FAA Standards for Runway Safety Area (RSA)
- Runway Protection Zone (RPZ) Compatible Land Use
- Potential impacts to Lake Washington
- Potential impacts to Cedar River
- Potential impacts to traffic and community
- Minimizing impacts to Renton High School
- Providing additional landside area for aircraft parking (both manufacturing and general aviation aircraft)

Next Steps

- Continued City Coordination on Preferred Airfield Alternative
- Development of Landside Alternatives
- Working Paper and RAAC Meeting (August 2018)

Renton

Project Schedule



Time Frame

Completed Project Element



Renton Airport Advisory Committee



Public Information Meeting/Open House



Neighborhood Group Meeting



City Decision/Acceptance Points



Working Papers



Draft Master Plan Final Report



Master Plan Final Report



Thank You!

- Master Plan
- Renton Municipal Airport/
Clayton Scott Field